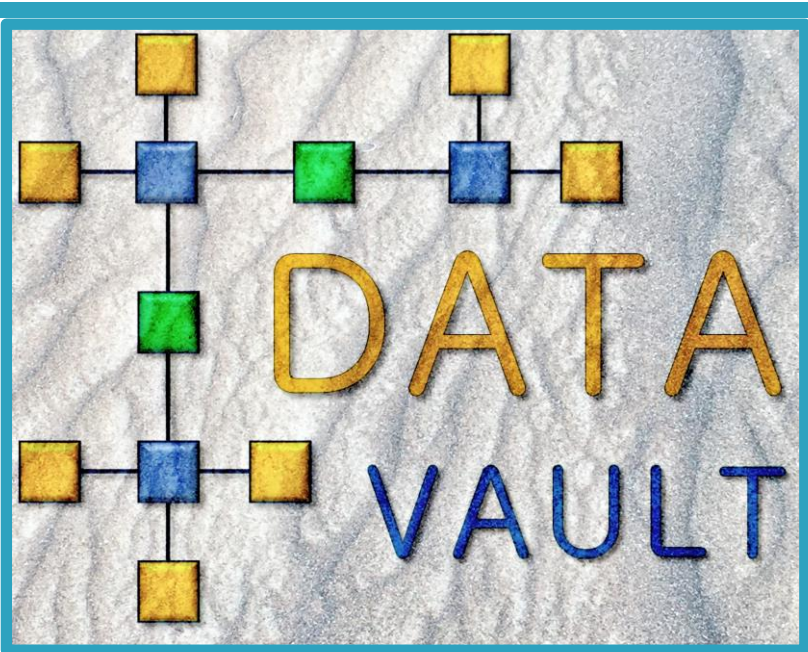


DATA VAULT CDVDM

Certified Data Vault Data Modeler Course 2020



DATA VAULT CDVDM

Certified Data Vault Data Modeler Course

Forward

Thank you for your interest in the Data Vault certification course. Your successful completion of this course will result in a designation of Certified Data Vault Data Modeler – CDVDM.

Data Vault modeling is rapidly becoming the standard modeling approach for the data warehouse. Over 2000 major international organizations are applying data vault modeling techniques today.

The data vault principles are specifically well suited for data integration and historization. When applied to data warehousing programs data vault modeling can provide the organization with some very compelling benefits. These include agility, auditability, adaptability, alignment with the business, and support for operational data warehousing initiatives.

To gain these benefits the organization will need to commit to both EDW program level factors as well as specific data vault modeling patterns, standards and best practices. This course will guide you through these modeling patterns, rules and methods to prepare you for successful data vault modeling in your organization.

Data Vault, and the underlying Ensemble Modeling Pattern, can be successfully applied not only to traditional platforms, but also to Big Data deployments, streaming applications, and Blockchain fabric initiatives. The foundational Ensemble Logical Model (ELM) provides the framework for understanding the enterprise data asset independent of the physical architecture.

We look forward to seeing you in the classroom.

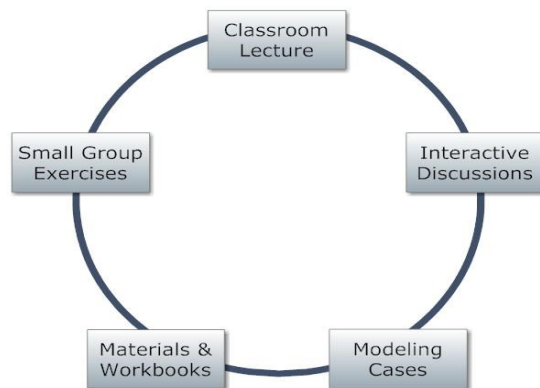


The CDVDM Course

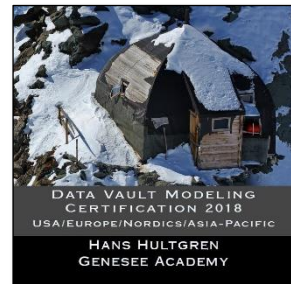
Welcome to the Certified Data Vault Data Modeler - CDVDM seminar! This course will guide you through the Data Vault modeling approach from modeling constructs and patterns to applying data vault principles in your DWBI program. This course also covers current and emerging data architectures (EDW, Cloud, Big Data, Streaming, & Blockchain), effective conceptual and logical modeling (ELM), and how to develop an overall agile enterprise data program. Since data vault may be new for you, this course also includes a summary of the benefits of using data vault techniques.

CDVDM Course Structure

The CDVDM course is a three (3) day intensive classroom-based course. The course consists of five (5) core components plus the certification exam. The classroom time is **45% Classroom Lecture**, **30% Small Group Exercises** and **25% Interactive Discussions**.



The course materials consist of a published course book that follows the classroom lectures and several modeling cases for the small group modeling labs. Class interactive discussions are based on these cases plus workbook examples. The course book is continually updated (version 40 published 2020) and contains the very latest advancements, insights and active best practices. These are based on the developments, experiences and active discussions by a consortium consisting of dozens of international experts.



Course Outline

Day One

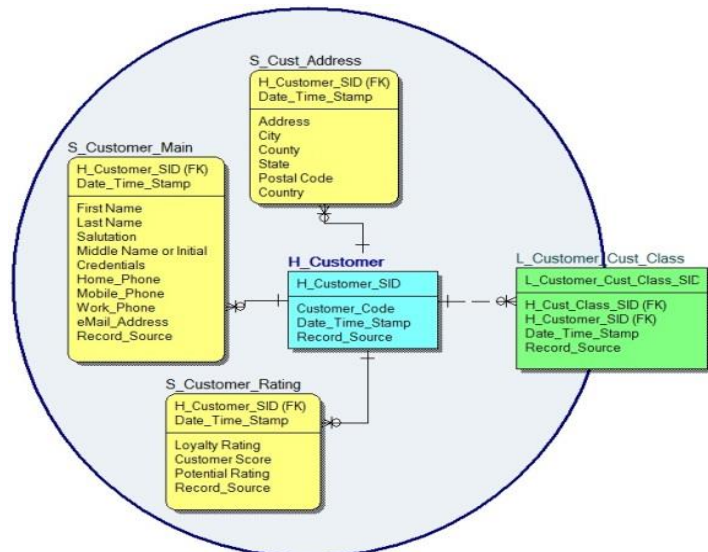
0830 Welcome & Introductions
 0900 Data Warehouse Modeling
 0930 Ensemble Modeling & ELM
 1000 Data Vault Core Constructs
 1020 Comparing Modeling Methods
 1030 Break
 1045 Tracking History
 10:55 Information & Logical Modeling
 11:15 Data Vault Modeling Process
 1115 First Small Group Case Exercise
 1200 Lunch
 1300 Continue First Case
 1345 Class Discussion & Groups Present
 1415 Link Design & Exceptions
 1430 SAL & HAL
 1440 Hub & Business Key Topics
 1500 Disconnected & Reference Tables
 1515 Break
 1530 Unit of Work & Keyed-Instance
 1600 Second Small Group Case Exercise
 1700 Wrap up for the Day

Day Two

0830 Q&A from Day One
 0915 Continue Second Case
 1030 Break
 1045 Class Discussion & Groups Present
 1120 Satellite Design & Exceptions
 1135 Expanded UOW & Keyed Instance
 1150 Modeling Context Close to Key
 1200 Lunch
 1300 Bike Shop Example
 1320 Applying the DV Ensemble
 1335 Standard and Expanded Attributes
 1350 Managing Dates / Bi-temporal Data
 1400 Third Small Group Case Exercise
 1515 Break
 1530 Continue Third Case
 1545 Class Discussion & Groups Present
 1620 Raw & BDV Layers
 1630 Hyper Forms and Unstructured
 1640 SID versus Hash & Performance
 1650 Virtualization
 1700 Wrap up for the Day

Day Three

0830 Q&A from Day Two
 0900 Data Vault & Agility
 0930 Data Vault & Big Data
 1000 Architecture & Layers
 1020 Helpful Tables: Bridge & PIT
 1030 Break
 1045 Loading Patterns
 1130 Class Discussion
 1145 Recap for Exam
 1200 Lunch
 1300 Recap & Discussions
 1330 CDVDM EXAM
 1630 Conclusion



Target Audience

The target audience for this course includes data modelers, enterprise architects, model managers, data warehousing and business intelligence professionals, data warehouse DBAs, data scientists, ETL professionals, CTOs, CIOs, Data Governance & MDM professionals, Big Data & Streaming developers. Because data vault modeling concepts are closely aligned with the business aspects of DWBI programs our target audience also includes program managers, business analysts, information modelers, information architects, and other BICC & corporate data professionals.

Requirements and Pre-Requisites

This course does not require a computer or other device. All materials, work books, case books and exercises will be provided. There are no pre-requisites for this course other than the included two (2) weeks of online on-demand video lessons from [eLearning.GeneseeAcademy.com](https://www.geneseeacademy.com) (provided as part of the class registration & useful to get all students familiar with the topic).




Registration and Fees

Please see [GeneseeAcademy.com](https://www.geneseeacademy.com) for Course Calendar and Pricing. Click here to [Register](#)

Contact Genesee Academy

For any other questions, please contact Genesee Academy

info@GeneseeAcademy.com +1 303 526 0340  [Twitter.com/GeneseeAcademy](https://twitter.com/GeneseeAcademy)

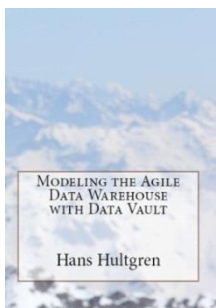
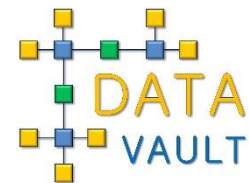
More Information on Data Vault



[HansHultgren.WordPress.com](https://www.hanshultgren.com)



[Linkedin.com/company/genesee-academy-llc](https://www.linkedin.com/company/genesee-academy-llc)



Standards: [DVstandards.com](https://www.dvstandards.com)

Book Available on **Amazon & Kindle:**

"Modeling the Agile Data Warehouse with Data Vault"